
Document # 80011A

SUBDIVISION PLAT FILING

**NAME OF
SUBDIVISION:**

CANYON SPRINGS RESORT U3A

MAP AND

PLAT:

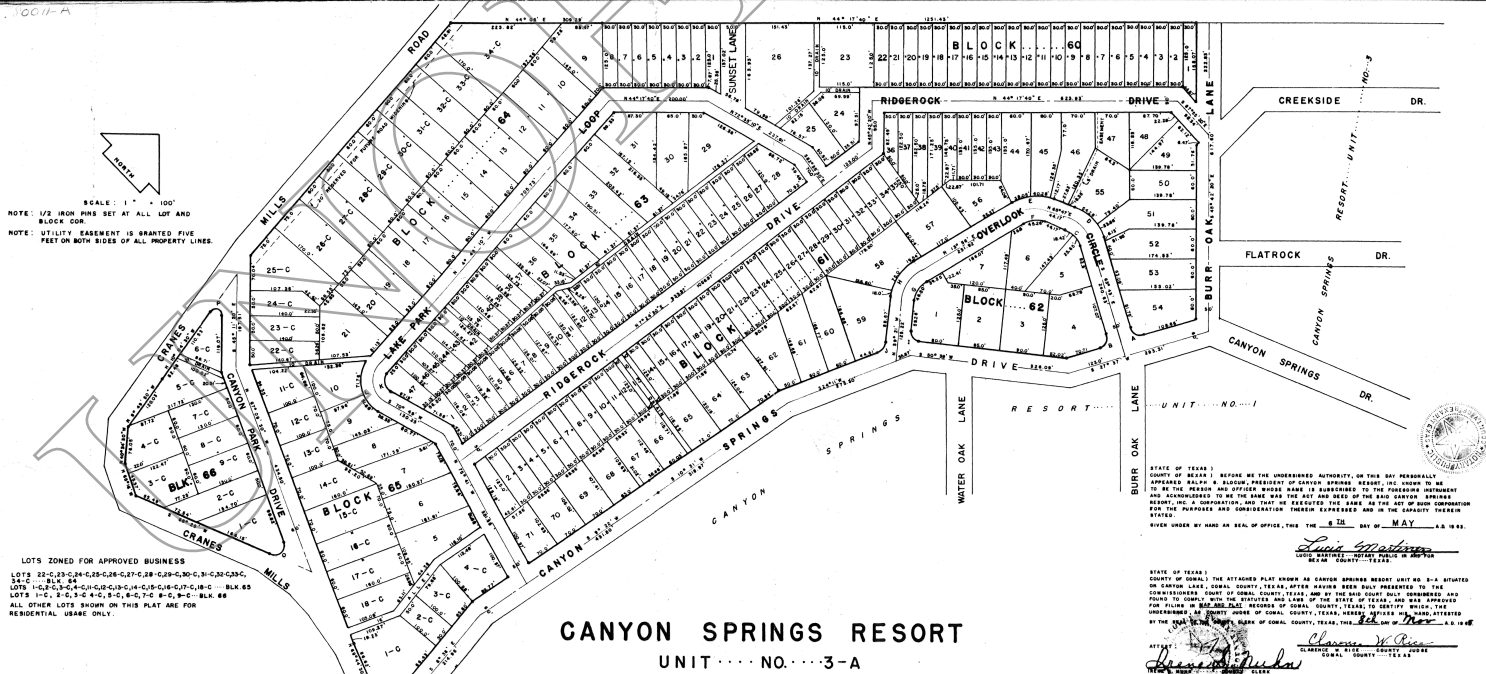
Volume: 2

Page: 6

Recorded Date:

November 2, 1965

PENDING



SCALE: 1" = 100'
 NOTE: 1/2" IRON PINS SET AT ALL LOT AND BLOCK COR.
 NOTE: UTILITY EASEMENT IS GRANTED FIVE FEET ON BOTH SIDES OF ALL PROPERTY LINES.

LOTS ZONED FOR APPROVED BUSINESS
 LOTS 12-C, 13-C, 14-C, 15-C, 16-C, 17-C, 18-C, 19-C, 20-C, 21-C, 22-C, 23-C, 24-C, 25-C, 26-C, 27-C, 28-C, 29-C, 30-C, 31-C, 32-C, 33-C, 34-C, 35-C, 36-C, 37-C, 38-C, 39-C, 40-C, 41-C, 42-C, 43-C, 44-C, 45-C, 46-C, 47-C, 48-C, 49-C, 50-C, 51-C, 52-C, 53-C, 54-C, 55-C, 56-C, 57-C, 58-C, 59-C, 60-C, 61-C, 62-C, 63-C, 64-C, 65-C, 66-C
 LOTS 1-C, 2-C, 3-C, 4-C, 5-C, 6-C, 7-C, 8-C, 9-C, 10-C, 11-C, 12-C, 13-C, 14-C, 15-C, 16-C, 17-C, 18-C, 19-C, 20-C, 21-C, 22-C, 23-C, 24-C, 25-C, 26-C, 27-C, 28-C, 29-C, 30-C, 31-C, 32-C, 33-C, 34-C, 35-C, 36-C, 37-C, 38-C, 39-C, 40-C, 41-C, 42-C, 43-C, 44-C, 45-C, 46-C, 47-C, 48-C, 49-C, 50-C, 51-C, 52-C, 53-C, 54-C, 55-C, 56-C, 57-C, 58-C, 59-C, 60-C, 61-C, 62-C, 63-C, 64-C, 65-C, 66-C
 ALL OTHER LOTS SHOWN ON THIS PLAN ARE FOR RESIDENTIAL USAGE ONLY.

CANYON SPRINGS RESORT

UNIT NO. 3-A

STATE OF TEXAS
 COUNTY OF CORNELL: THAT CANYON SPRINGS RESORT, INC., A CORPORATION ORGANIZED AND EXISTING UNDER THE LAWS OF THE STATE OF TEXAS, ACTING HEREIN BY AND THROUGH ITS DULY AUTHORIZED PRESIDENT, RALPH B. BLOOM, AS OWNER, HEREBY ADOPTS THE MAP AND PLAN AS SHOWN HEREIN AS TRUE AND CORRECT REPRESENTATION OF A SUBDIVISION OF 30.840 ACRES OF LAND OUT OF THE MARTIN TRACT AS SHOWN HEREIN AS TRUE AND CORRECT REPRESENTATION OF A SUBDIVISION OF 30.840 ACRES OF LAND OUT OF THE MARTIN TRACT TO CANYON SPRINGS RESORT, INC. BY TRACTLY CHAINED BY DEED DATED JUNE 15, 1960 AND RECORDED IN VOLUME 120 PAGES 287-288, DEED RECORDS OF CORNELL COUNTY, TEXAS, SAID SUBDIVISION TO BE KNOWN AS CANYON SPRINGS RESORT WHOSE NAME IS ENDORSED HEREON, AND HEREBY DEDICATES TO THE USE OF THE PUBLIC FOREVER ALL STREETS AND EASEMENTS HEREON SHOWN AND FOR THE PURPOSES AND CONSIDERATIONS THEREIN EXPRESSED AS SHOWN ON SAID PLAN.

IN WITNESS WHEREOF, THE SAID CANYON SPRINGS RESORT, INC., HAS CAUSED THESE PRESENTS TO BE SIGNED BY ITS PRESIDENT, AND ITS COMMON SEAL TO BE HEREUNTO AFFIXED BY ITS SECRETARY ON THIS 6TH DAY OF MAY, A.D. 1963.

CANYON SPRINGS RESORT, INC.
Ralph B. Bloom PRESIDENT
John A. Seal SECRETARY

IT IS UNDERSTOOD THAT CANYON SPRINGS RESORT, INC. HEREBY RESERVES FOR ITSELF, ITS SUCCESSORS AND ASSIGNS, THE EXCLUSIVE RIGHT TO LAY WATER MAINS, GAS MAINS AND OTHER UTILITIES ON THE STREETS DEDICATED ON THIS PLAN.

STATE OF TEXAS
 COUNTY OF CORNELL: I, _____, COUNTY CLERK, DO HEREBY CERTIFY THAT THE ABOVE AND FOREGOING MAP AND PLAN HAS BEEN FILED FOR RECORD IN THE PUBLIC RECORDS OF THIS COUNTY, TEXAS, AND THAT THE SAME IS CORRECTLY RECORDED IN VOLUME _____ PAGES _____ OF THE PUBLIC RECORDS OF THIS COUNTY, TEXAS.

STATE OF TEXAS
 COUNTY OF CORNELL: I, _____, COUNTY CLERK, DO HEREBY CERTIFY THAT THE ABOVE AND FOREGOING MAP AND PLAN HAS BEEN FILED FOR RECORD IN THE PUBLIC RECORDS OF THIS COUNTY, TEXAS, AND THAT THE SAME IS CORRECTLY RECORDED IN VOLUME _____ PAGES _____ OF THE PUBLIC RECORDS OF THIS COUNTY, TEXAS.

STATE OF TEXAS
 COUNTY OF CORNELL: I, _____, COUNTY CLERK, DO HEREBY CERTIFY THAT THE ABOVE AND FOREGOING MAP AND PLAN HAS BEEN FILED FOR RECORD IN THE PUBLIC RECORDS OF THIS COUNTY, TEXAS, AND THAT THE SAME IS CORRECTLY RECORDED IN VOLUME _____ PAGES _____ OF THE PUBLIC RECORDS OF THIS COUNTY, TEXAS.

CURVE DATA			
RADIUS	DELTA	TANGENT LENGTH	CHORD
A 200'	89°40'	202.4	308.5
B 200'	91°20'	204.7	318.8
C 200'	93°00'	207.0	329.1
D 100.0'	200°30'	47.18'	88.14'
E 100.0'	81°51'	48.65'	90.96'
F 50.0'	51°12'	24.31'	45.23'
G 50.0'	53°12'	25.08'	46.90'
H 100.0'	59°17'	50.17'	93.00'
I 100.0'	60°00'	50.00'	91.42'
J 15.0'	85°31'	15.88'	27.72'
K 15.0'	104°15'00"	32.53'	45.56'
L 75.0'	104°15'00"	98.73'	136.70'
M 200'	38°55'00"	63.86'	132.2'
N 200'	78°00"	163.1'	275.9'
O 203'	107°14'30"	47.56'	47.55'
P 100.0'	144°25'	31.60'	31.58'

Vol. 2
 page 6